
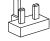

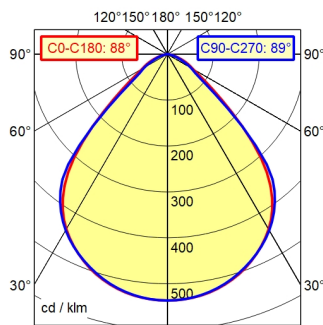
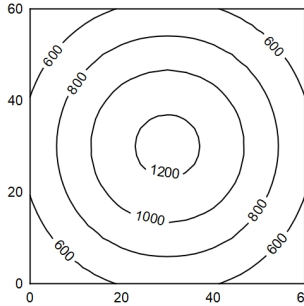


-  CEE 7/XVI
-  BS 1363
-  NEMA 1-15P

A50 | 100.0% Φ: 600 lm



60 x 60 cm Φ: 600 lm
 Em: 832 lx
 Emax: 1251 lx
 Emin: 434 lx = 50 cm



Height (m)	Beam Angle	Illuminance (lx)	Radius (m)
0.25	CO-C180: 88° / C90-C270: 89°	5150	0.48 0.49
0.50		1288	0.96 0.98
0.75		572	1.44 1.46
1.00		322	1.92 1.95

- light source**
- work equipment**
- connected load**
- power consumption**
- luminous flux**
- luminous efficiency**
- light type/-color**
- colour temperatur**
- color rendering index**
- light distribution**
- direct ratio**
- beam angle**
- chromaticity tolerance LED**
- glare control**
- system of protection**
- class of protection**
- technology**
- operation**
- housing**
- cover**
- arm**
- weight (net)**
- mains lead**
- fastening**
- special features**

- LED
- electronic plug-in transformer
- 100 - 240 V; Wechselstrom (AC); 50 Hz; 60 Hz
- ca. 7 W
- approx. 600 lm
- approx. 100 lm/W
- cold white
- approx. 4.000 K
- CRI > 90; R9 > 50
- direct; symmetric
- approx. 100 %
- 90°
- < 3 SDCM
- plastic reflector
- IP 20
- II with plug-in power supply, III without plug-in power supply
- continuously dimmable; no notice
- push button
- aluminium; painted; white
- clear; plastic
- white
- ca. 1 kg
- ca. 3 m; mains plug; CEE 7/XVI; BS 1363; NEMA 1-15P
- adaptor (accessory); tap16; table base (accessory); table clamp (accessory)
- automatic switchoff adjustable; behaviour at net recovery adjustable; push button in luminaire head

