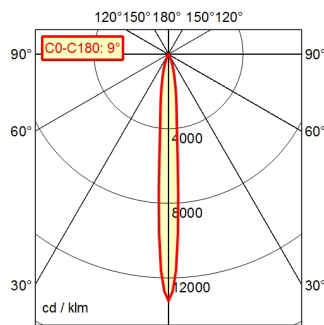


CE

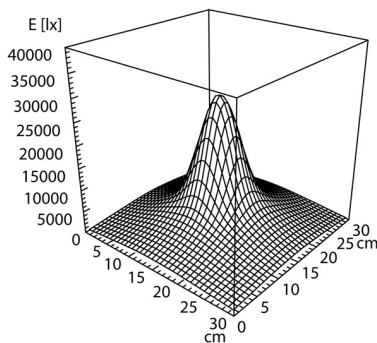
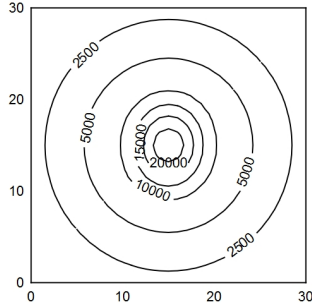


CEE 7/VII

A80 | 100.0%      Φ: 600 lm



30 x 30 cm      Φ: 600 lm  
Em: 5010 lx  
Emax: 28559 lx  
Emin: 839 lx



**Light source**

**Work equipment**

**Connected load**

**Power consumption**

**Luminous flux**

**Luminous efficiency** <sup>1)</sup>

**Light type/-color**

**Colour temperatur**

**Color rendering index**

**Light distribution**

**Beam angle**

**Chromaticity tolerance LED**

**Glare control**

**Luminance (L65)**

**Unified glare rating (4H 8H)** <sup>2)</sup>

**System of protection**

**Class of protection**

**Technology**

**Operation**

**Housing**

**Light source cover**

**Mains lead**

**Fastening**

**Add-on lens**

**Maximum ambient temperature**

**EAN**

**Weight (net)**

**Special features**

LED

Electronic ballast in housing

100 - 240 V; AC; 50 Hz; 60 Hz

ca. 9 W

approx. 600 lm

approx. 66 lm/W

Cold white

approx. 5.000 K

CRI ≥ 80

Narrow-beam; Direct; Black

10°

< 4 SDCM

Optics

≤ 4.000 cd/m<sup>2</sup>

≤ 16

IP 20 [IP65]

I

Switchable; Continuously dimmable

Push button

Aluminium; Anodised; Black

Borosilicate

ca. 3 m; Mains plug; CEE 7/VII

Table clamp (accessory); Wall bracket (accessory);

Screw-down flange

Not available

25 °C

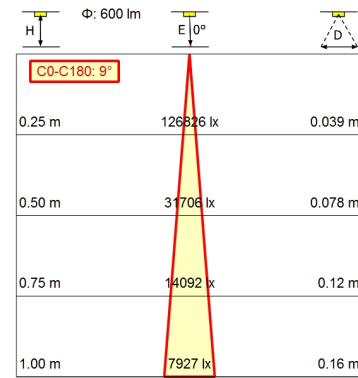
4013330088217

ca. 2,7 kg

Spot

# Arm-mounted luminaire ROCIA.focus RFD 600/850/D

113181000-00679131



<sup>1)</sup> For luminaires with separate control gear, the luminous efficacy refers to the luminaire head without control gear according to DIN EN 12464-1:2021

<sup>2)</sup>