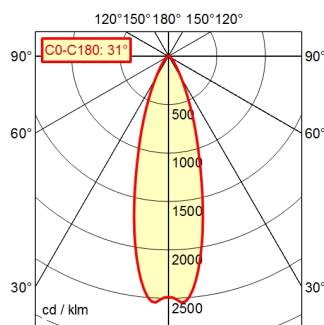


CE



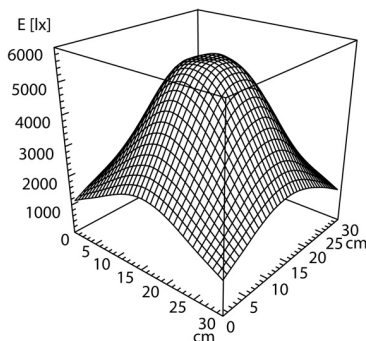
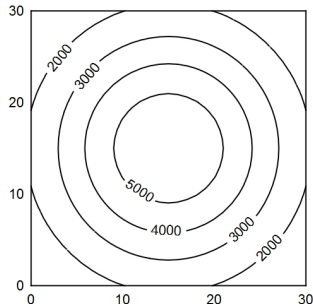
CEE 7/VII

A70 | 100.0% Φ : 550 lm



30 x 30 cm Φ : 550 lm

Em: 3261 lx
Emax: 5572 lx
Emin: 1223 lx



Light source

Work equipment

Connected load

Power consumption

Luminous flux

Luminous efficiency ¹⁾

Light type/-color

Colour temperatur

Color rendering index

Light distribution

Beam angle

Chromaticity tolerance LED

Glare control

Luminance (L65)

Unified glare rating (4H 8H) ²⁾

System of protection

Class of protection

Technology

Operation

Housing

Light source cover

Mains lead

Fastening

Add-on lens

Maximum ambient temperature

EAN

Weight (net)

Special features

LED

Electronic ballast in housing

100 - 240 V; AC; 50 Hz; 60 Hz

ca. 9 W

approx. 550 lm

approx. 61 lm/W

Cold white

approx. 5.000 K

CRI \geq 80

Wide beam; Direct; Black

30°

< 4 SDCM

Optics

\leq 6.000 cd/m²

\leq 19

IP 20 [IP65]

I

Switchable; Continuously dimmable

Push button

Aluminium; Anodised; Black

Borosilicate

ca. 3 m; Mains plug; CEE 7/VII

Table clamp (accessory); Wall bracket (accessory);

Screw-down flange

Not available

25 °C

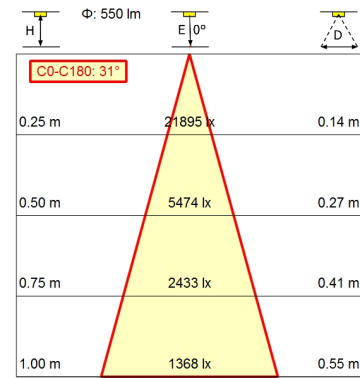
4013330088187

ca. 2,7 kg

Flood

**Arm-mounted luminaire ROCIA.focus
RFD 600/850/D**

113181000-00680167



¹⁾ For luminaires with separate control gear, the luminous efficacy refers to the luminaire head without control gear
²⁾ according to DIN EN 12464-1:2021