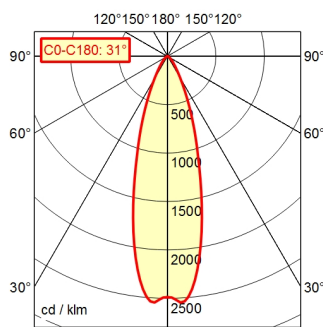


CE



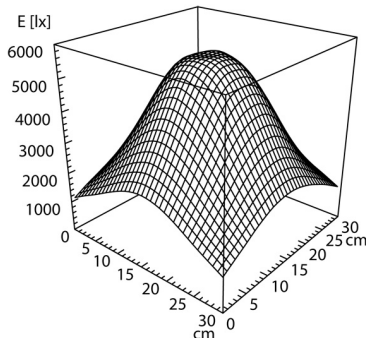
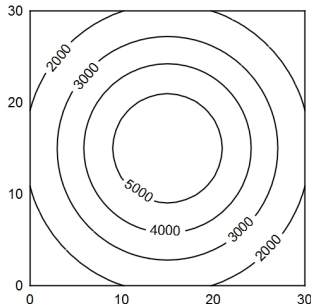
CEE 7/7II

A70 | 100.0% Φ: 550 lm



30 x 30 cm Φ: 550 lm

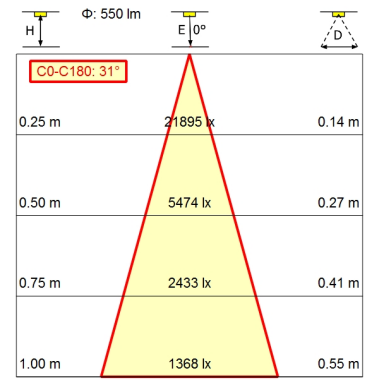
Em: 3261 lx
Emax: 5572 lx
Emin: 1223 lx



Light source	LED
Work equipment	Electronic ballast in housing
Connected load	100 - 240 V; AC; 50 Hz; 60 Hz
Power consumption	ca. 9 W
Luminous flux	approx. 550 lm
Luminous efficiency ¹⁾	approx. 61 lm/W
Light type/-color	Cold white
Colour temperatur	approx. 5.000 K
Color rendering index	CRI ≥ 80
Light distribution	Wide beam; Direct; Flexible metal tube; Black
Beam angle	30°
Chromaticity tolerance LED	< 4 SDCM
Glare control	Optics
Luminance (L65)	≤ 6.000 cd/m ²
Unified glare rating (4H 8H) ²⁾	≤ 19
System of protection	IP 20 [IP65]
Class of protection	I
Technology	Switchable; Continuously dimmable; -
Operation	Push button
Housing	Aluminium; Anodised; Black
Light source cover	Borosilicate
Mains lead	ca. 3,2 m; Mains plug; CEE 7/7II
Fastening	Table clamp (accessory); Wall bracket (accessory); Screw-down flange Not available
Add-on lens	
Maximum ambient temperature	25 °C
EAN	4013330088361
Weight (net)	ca. 2,9 kg
Special features	Flood

**Flexible-tube luminaire ROCIA.focus
RFF 600/850/D**

113183000-00680251



¹⁾ For luminaires with separate control gear, the luminous efficacy refers to the luminaire head without control gear according to DIN EN 12464-1:2021

²⁾