

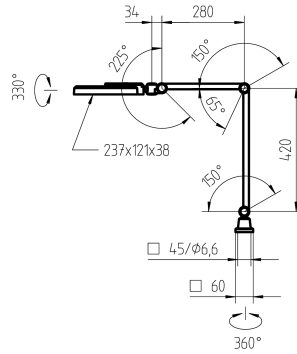
# Arm-mounted luminaire ROCIA.planar

## RPD 1700/850

113458000-00668976

# Waldmann **W**

ENGINEERS OF LIGHT

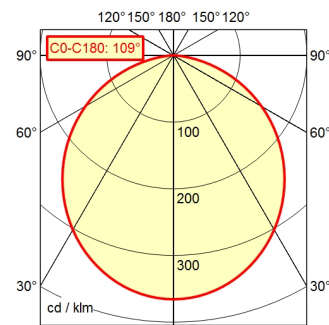


CE



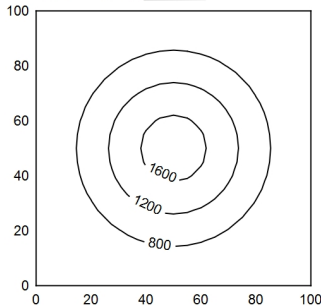
CEE 7/VII

A40 ↓ 100.0%      Φ: 1350 lm



100 x 100 cm      Φ: 1350 lm

Em: 787 lx  
Emax: 1721 lx  
Emin: 260 lx



light source  
work equipment  
connected load  
power consumption  
luminous flux  
luminous efficiency  
light type/-color  
colour temperatur  
color rendering index  
light distribution  
direct ratio  
beam angle  
chromaticity tolerance LED  
glare control  
luminance (L65)  
unified glare rating (4H 8H)  
class of protection  
technology  
operation  
housing  
cover  
arm  
weight (net)  
mains lead  
fastening

LED  
electronic ballast in housing  
100 - 240 V; alternating current (AC); 50 Hz; 60 Hz  
ca. 18 W  
approx. 1.350 lm  
approx. 75 lm/W  
cold white  
approx. 5.000 K  
CRI ≥ 80  
direct  
approx. 100 %  
110°  
< 4 SDCM  
see luminaire type  
≤ 22000 cd/m<sup>2</sup>  
005  
I  
switchable  
push button  
painted: Jet black  
Polycarbonate (PC); white opal  
black  
ca. 2,2 kg  
ca. 3 m; mains plug: CEE 7/VII  
table clamp (accessory); wall bracket (accessory);  
screw-down flange