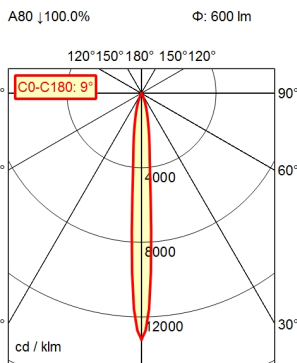
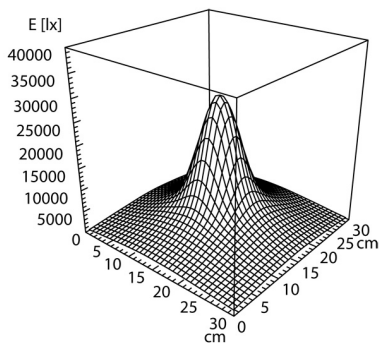
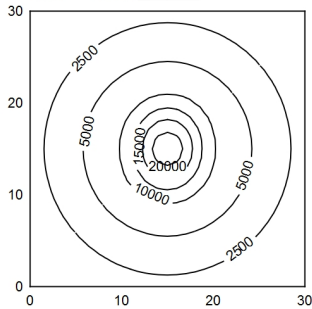


CE



30 x 30 cm $\phi: 600 \text{ lm}$
Em: 5010 lx
Emax: 28559 lx
Emin: 839 lx
= 50 cm



light source
work equipment
connected load
power consumption
luminous flux
luminous efficiency
light distribution
beam angle
colour temperature
colour temperatur
color rendering index (CRI)
chromaticity tolerance LED
glare control
luminance (L65)
unified glare rating (4H 8H)
system of protection
class of protection
technology
operation
housing
cover
mains lead
fastening
accessory
special features

LED
without
12-28V AC and 12-40V DC
env. ca. 8.5 W
approx. 600 lm
approx. 75 lm/W
direct, narrow-angled beam
10°
neutral white
approx. 5.000 K
 ≥ 80
 < 4 SDCM
screen
 $\le 4000 \text{ cd/m}^2$
 ≤ 16
67
III
switchable
push button
aluminium; anodised; black
glass screen
approx. 3,7 m; with free stranded wires
wall bracket (accessory); screw-down flange;
magnetic base (accessory)
ballast
Spot with a 10° angle of radiation

Pivoting-head luminaire ROCIA.focus
RFJ 600/850/DS

113512000-00721990

