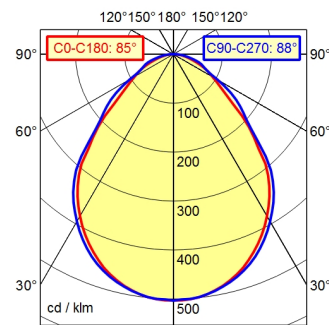
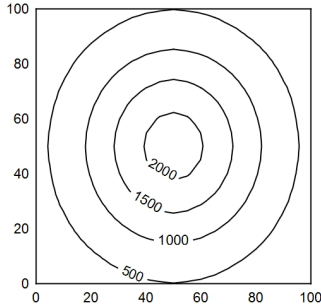


A50 ↓ 100.0%      Φ: 1250 lm



100 x 100 cm      Φ: 1250 lm  
 Em: 892 lx  
 Emax: 2140 lx  
 Emin: 196 lx  
 = 50 cm



**light source**  
**work equipment**  
**connected load**  
**power consumption**  
**luminous flux**  
**luminous efficiency**  
**light type/-color**  
**colour temperatur**  
**color rendering index**  
**light distribution**  
**direct ratio**  
**beam angle**  
**chromaticity tolerance LED**  
**glare control**  
**luminance (L65)**  
**unified glare rating (4H 8H)**  
**system of protection**  
**class of protection**  
**technology**  
**operation**  
**housing**  
**cover**  
**arm**  
**balance of articulation joints**  
**weight (net)**  
**mains lead**  
**fastening**

LED  
 electronic plug-in ballast  
 100 - 240 V; Wechselstrom (AC); 50 Hz; 60 Hz  
 ca. 16 W  
 approx. 1.250 lm  
 approx. 78 lm/W  
 cold white  
 approx. 5.000 K  
 CRI > 80  
 direct  
 approx. 100 %  
 85  
 < 5 SDCM  
 structured screen  
 <= 16000 cd/m<sup>2</sup>  
 <= 25  
 IP 20  
 II with plug-in power supply, III without plug-in power supply  
 Touch DIM  
 multi-function switch  
 untreated; dusty grey  
 structured; plastic  
 tubular aluminium section; anodized; aluminium coloured anodised  
 spring  
 ca. 1,9 kg  
 ca. 3,2 m; mains plug; CEE 7/XVI; BS 1363 A; NEMA 1-15P  
 tap16; table clamp (accessory); wall bracket (accessory); screw-down flange