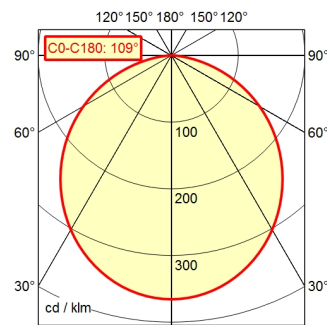


CE



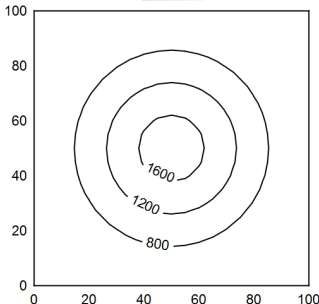
CEE 7/XXVII

A40 ↓ 100.0% Φ: 1350 lm



100 x 100 cm Φ: 1350 lm

Em: 787 lx
Emax: 1721 lx
Emin: 260 lx



Light source

Work equipment

Connected load

Power consumption

Luminous flux

Luminous efficiency¹⁾

Light type/-color

Colour temperatur

Color rendering index

Light distribution

Direct ratio

Beam angle

Chromaticity tolerance LED

Glare control

Luminance (L65)

Unified glare rating (4H 8H)²⁾

System of protection

Class of protection

Technology

Operation

Emergency lighting

Housing

Light source cover

Mains lead

Fastening

EAN

Weight (net)

LED

Electronic transformer

100 - 240 V; AC; 50 Hz; 60 Hz

ca. 18 W

approx. 1.350 lm

approx. 75 lm/W

Cold white

approx. 5.000 K

CRI ≥ 80

Direct; Tubular aluminium section; Anodized; Black

approx. 100 %

110°

< 4 SDCM

Diffusor

≤ 22.000 cd/m²

≤ 28

IP 20 [IP65]

I

Continuously dimmable; -; Spring

Push button

none

Painted; Jet black

Polycarbonate (PC); White opal

ca. 3,8 m; Mains plug; CEE 7/XXVII

Table clamp (accessory); Wall bracket (accessory);

Screw-down flange

4013330053529

ca. 2,2 kg

¹⁾ For luminaires with separate control gear, the luminous efficacy refers to the luminaire head without control gear according to DIN EN 12464-1:2021

²⁾