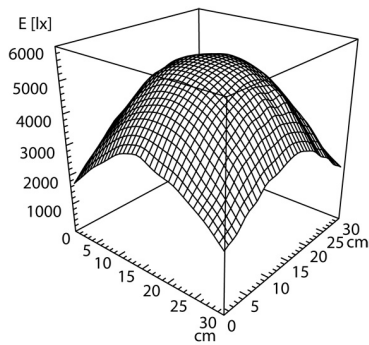
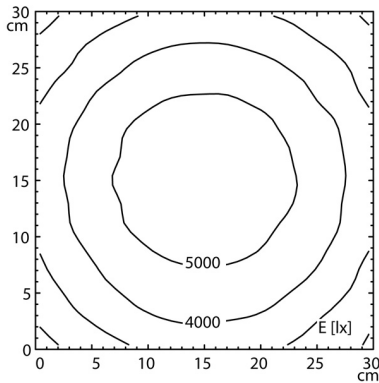
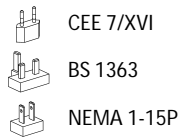


CE



<b>Light source</b>	LED
<b>Work equipment</b>	Electronic plug-in ballast
<b>Connected load</b>	100 - 240 V; AC; 50 Hz; 60 Hz
<b>Secondary tension</b>	24 V
<b>Power consumption</b>	ca. 13 W
<b>Sec. power consumption</b>	ca. 11 W
<b>Luminous flux</b>	approx. 750 lm
<b>Light type/-color</b>	Cold white
<b>Colour temperatur</b>	approx. 4.000 K
<b>Color rendering index</b>	CRI ≥ 90; R9 ≥ 50
<b>Light distribution</b>	Direct; Tubular aluminium section; Anodized; Aluminium coloured anodised approx. 100 %
<b>Direct ratio</b>	< 3 SDCM
<b>Chromaticity tolerance LED</b>	without
<b>Glare control</b>	IP 20
<b>System of protection</b>	II with plug-in power supply, III without plug-in power supply
<b>Class of protection</b>	Multi-stage switchable; Continuously dimmable; Touch DIM; Spring Multi-function switch
<b>Technology</b>	none
<b>Operation</b>	Plastic; Untreated; Black
<b>Emergency lighting</b>	Polyamide; Milky
<b>Housing</b>	ca. 3,4 m; Mains plug; CEE 7/XVI; BS 1363; NEMA 1-15P
<b>Light source cover</b>	Screw-down flange
<b>Mains lead</b>	Ø 160 mm
<b>Fastening</b>	Glass
<b>Lens, dimensions</b>	3,5; 3,5 DPT
<b>Lens material</b>	Not available
<b>Lens, diopters</b>	4013330043919
<b>Add-on lens</b>	ca. 3 kg
<b>EAN</b>	Long arms; Light characteristic can be adjusted with a 3-way switch
<b>Weight (net)</b>	
<b>Special features</b>	