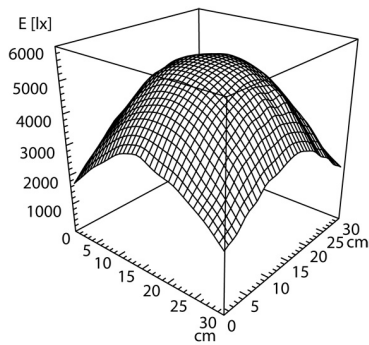
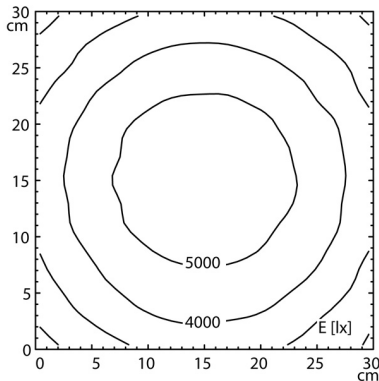
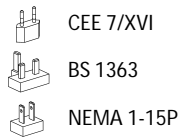


CE



Light source	LED
Work equipment	Electronic plug-in ballast
Connected load	100 - 240 V; AC; 50 Hz; 60 Hz
Secondary tension	24 V
Power consumption	ca. 13 W
Sec. power consumption	ca. 11 W
Luminous flux	approx. 750 lm
Light type/-color	Cold white
Colour temperatur	approx. 4.000 K
Color rendering index	CRI ≥ 90; R9 ≥ 50
Light distribution	Direct; Tubular aluminium section; Anodized; Aluminium coloured anodised approx. 100 %
Direct ratio	< 3 SDCM
Chromaticity tolerance LED	without
Glare control	IP 20
System of protection	II with plug-in power supply, III without plug-in power supply
Class of protection	Multi-stage switchable; Continuously dimmable; Touch DIM; Spring Multi-function switch
Technology	none
Operation	Plastic; Untreated; Black
Emergency lighting	Polyamide; Milky
Housing	ca. 3,4 m; Mains plug; CEE 7/XVI; BS 1363; NEMA 1-15P
Light source cover	Screw-down flange
Mains lead	Ø 160 mm
Fastening	Glass
Lens, dimensions	3,5; 3,5 DPT
Lens material	available; Ø 31,5 mm
Lens, diopters	8 DPT
Add-on lens	4013330044091
Add-on lens, diopters	ca. 3 kg
EAN	Long arms; Adhesive add-on magnifier; Light characteristic can be adjusted with a 3-way switch
Weight (net)	
Special features	