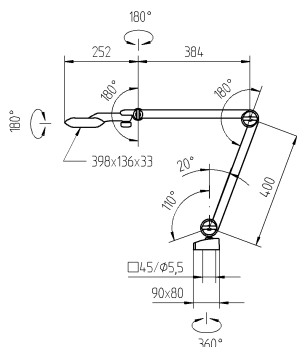
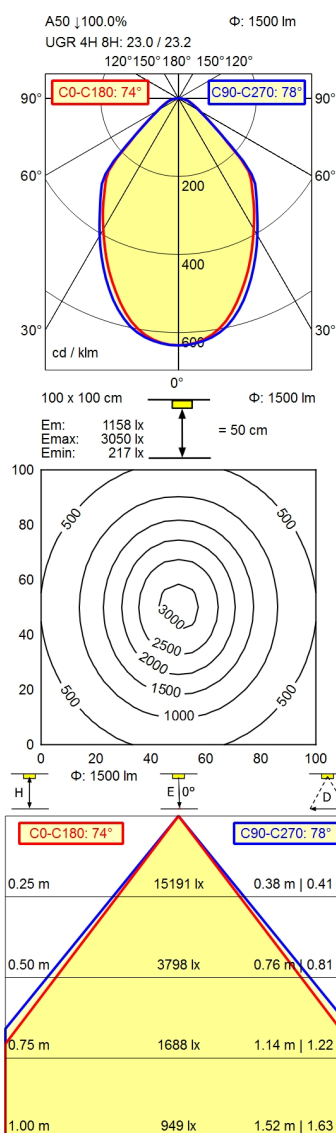


Arm-mounted luminaire TANEO
TND 1400/950/D
113735000-00809726



CEE 7/VII



light source
work equipment
connected load
power consumption
luminous flux
luminous efficiency
light type/-color
colour temperatur
color rendering index
light distribution
direct ratio
beam angle
chromaticity tolerance LED
luminance (L65)
unified glare rating (4H 8H)
system of protection
class of protection
operation
housing
cover
arm
balance of articulation joints
mains lead
fastening
decorative contrast side parts

LED
electronic ballast
100-240 V, 50/60 Hz; secondary 24 V, DC
env. 23 W
approx. 1.500 lm
approx. 79 lm/W
cold white
approx. 5.000 K
CRI > 90; R9 > 50
direct
approx. 100 %
75°
< 3 SDCM
<= 12000 cd/m²
<= 25
IP 20
I with plug-in power supply; III without plug-in
power supply
multi-function switch
aluminium coloured anodised
structured; plastic
silver metallic
spring
ca. 3,40 m; mains plug; CEE 7/VII
table base
black

