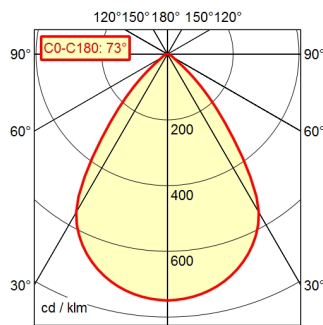


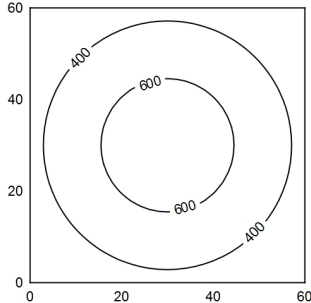
CEE 7/XXVI

A60 | 100.0% Φ : 265 lm



60 x 60 cm Φ : 265 lm

Em: 461 lx
Emax: 712 lx
Emin: 176 lx
= 50 cm



Light source	LED module
Work equipment	Electronic plug-in transformer
Connected load	100 - 240 V; AC; 50 Hz; 60 Hz
Secondary tension	5 V
Power consumption	ca. 4 W
Sec. power consumption	ca. 3,5 W
Standby	ca. 0,3 W
Power factor	env. 0,97
Luminous flux	approx. 265 lm
Luminous efficiency ¹⁾	approx. 85 lm/W
Light type/-color	Warm white
Colour temperatur	approx. 3.000 K
Color rendering index	CRI ≥ 80
Light distribution	Direct; Tubular aluminium section; Anodized; Tubular section upright; Titanium approx. 100 %
Direct ratio	73°
Beam angle	73°
Chromaticity tolerance LED	< 3 SDCM
Glare control	Optics
System of protection	IP 20
Class of protection	II with plug-in power supply, III without plug-in power supply
Technology	Continuously dimmable; DC control signal; Friction
Operation	Push button
Emergency lighting	none
Housing	Plastic; Untreated; Umbra grey
Light source cover	Polycarbonate (PC); Satine
Mains lead	ca. 1,5 m; Mains plug; CEE 7/XXVI
Fastening	Adaptor (accessory); Table clamp (accessory); Table base
Energy efficiency class	E
EAN	4013330143510
Weight (net)	ca. 1,9 kg
Special features	Push button in luminaire head

¹⁾ For luminaires with separate control gear, the luminous efficacy refers to the luminaire head without control gear