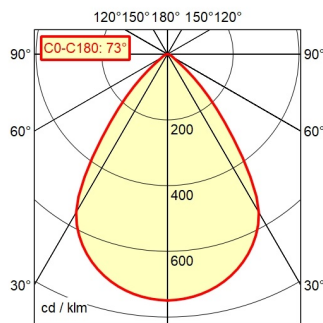


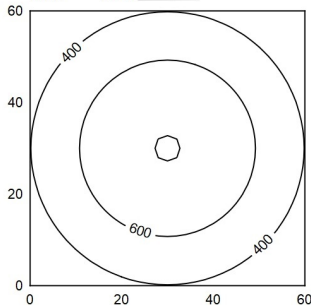
CEE 7/XXVI

A60 | 100.0% Φ : 300 lm



60 x 60 cm Φ : 300 lm

Em: 522 lx
Emax: 806 lx
Emin: 199 lx



Light source

Work equipment

Connected load

Secondary tension

Power consumption

Sec. power consumption

Standby

Power factor

Luminous flux

Luminous efficiency¹⁾

Light type/-color

Colour temperatur

Color rendering index

Light distribution

Direct ratio

Beam angle

Chromaticity tolerance LED

Glare control

System of protection

Class of protection

Technology

Operation

Emergency lighting

Housing

Light source cover

Mains lead

Fastening

Energy efficiency class

EAN

Weight (net)

Special features

LED module

Electronic plug-in transformer

100 - 240 V; AC; 50 Hz; 60 Hz

5 V

ca. 4 W

ca. 3,5 W

ca. 0,3 W

env. 0,97

approx. 300 lm

approx. 96 lm/W

Cold white

approx. 4.000 K

CRI \geq 80

Direct; Tubular aluminium section; Anodized;

Tubular section upright; Titanium

approx. 100 %

73°

< 3 SDCM

Optics

IP 20

II with plug-in power supply, III without plug-in power supply

Continuously dimmable; DC control signal; Friction

Push button

none

Plastic; Untreated; Umbra grey

Polycarbonate (PC); Satine

ca. 1,5 m; Mains plug; CEE 7/XXVI

Adaptor (accessory); Table clamp (accessory); Table base

E

4013330143527

ca. 1,9 kg

Push button in luminaire head

¹⁾ For luminaires with separate control gear, the luminous efficacy refers to the luminaire head without control gear