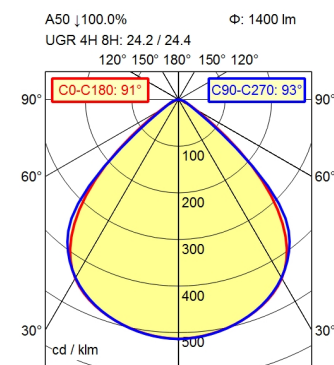
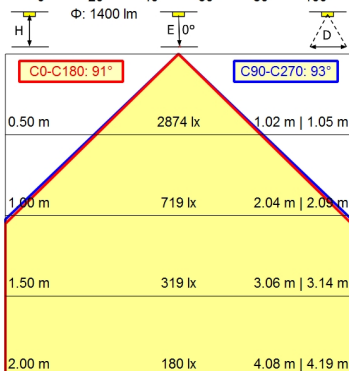
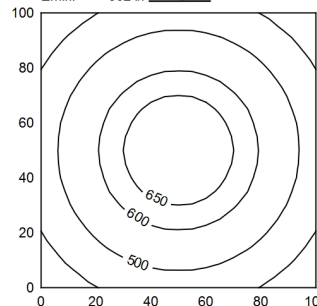


M12-A-5



100 x 100 cm Φ: 1400 lm
 Em: 534 lx
 Emax: 695 lx
 Emin: 362 lx



Light source	LED
Work equipment	Without
Connected load	24 V; DC
Power consumption	ca. 12 W
Luminous flux	approx. 1.400 lm
Luminous efficiency	approx. 116 lm/W
Light type/-color	Cold white
Colour temperatur	approx. 5.000 K
Color rendering index	CRI ≥ 80; R9 ≥ 10
Light distribution	Direct; Symmetric
Beam angle	91°
Chromaticity tolerance LED	< 3 SDCM
Glare control	Screen
Luminance (L65)	≤ 11.000 cd/m ²
Unified glare rating (4H 8H)	≤ 25
System of protection	IP 67
Class of protection	III
Technology	Multi-stage switchable
Operation	External
Housing	Aluminium; Anodised; Aluminium coloured anodised Borosilicate
Light source cover	
Weight (net)	ca. 0,6 kg
Mains lead	Built-in plug; M12-A-5
Design	mounted version
Fastening	Snap-fit
Dimension	A=215 mm
Minimum ambient temperature	0 °C
Maximum ambient temperature	50 °C
Special features	ADVANCED package

Surface-mounted luminaire ACURIA.perfect
APA 1400/850/MS
114310000-00806668

