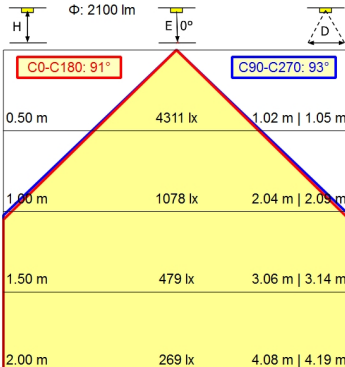
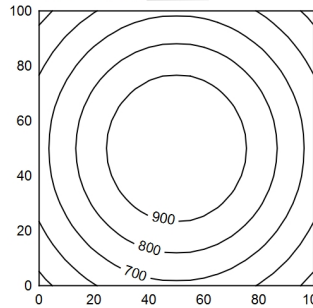
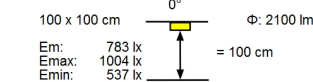
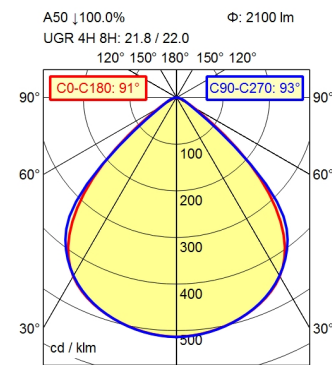


M12-A-5



Light source	LED
Work equipment	Without
Connected load	24 V; DC
Power consumption	ca. 17 W
Luminous flux	approx. 2.100 lm
Luminous efficiency	approx. 123 lm/W
Light type/-color	Cold white
Colour temperatur	approx. 5.000 K
Color rendering index	CRI ≥ 80; R9 ≥ 10
Light distribution	Direct; Symmetric
Beam angle	91°
Chromaticity tolerance LED	< 3 SDCM
Glare control	Screen
Luminance (L65)	≤ 5.200 cd/m ²
Unified glare rating (4H 8H)	≤ 22
System of protection	IP 67
Class of protection	III
Technology	Multi-stage switchable
Operation	External
Housing	Aluminium; Anodised; Aluminium coloured anodised Borosilicate
Light source cover	
Weight (net)	ca. 1,6 kg
Mains lead	Built-in plug; M12-A-5
Design	mounted version
Fastening	Snap-fit
Dimension	A=565 mm
Minimum ambient temperature	0 °C
Maximum ambient temperature	50 °C
Special features	ADVANCED package

