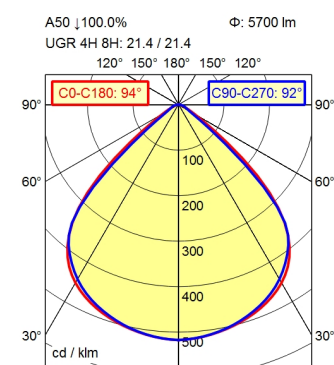
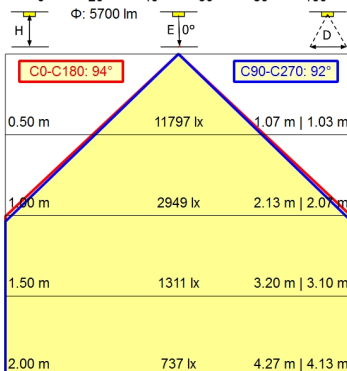
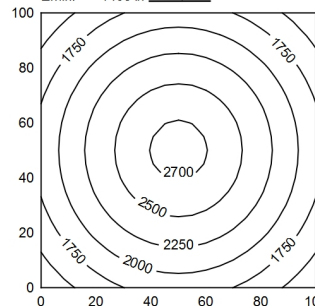




M12-A-5



100 x 100 cm      Φ: 5700 lm  
 Em: 2134 lx  
 Emax: 2732 lx  
 Emin: 1468 lx  
 = 100 cm



<b>Light source</b>	LED
<b>Work equipment</b>	Without
<b>Connected load</b>	24 V; DC
<b>Power consumption</b>	ca. 42 W
<b>Luminous flux</b>	approx. 5.700 lm
<b>Luminous efficiency</b>	approx. 135 lm/W
<b>Light type/-color</b>	Cold white
<b>Colour temperatur</b>	approx. 5.000 K
<b>Color rendering index</b>	CRI ≥ 80; R9 ≥ 10
<b>Light distribution</b>	Direct; Symmetric
<b>Beam angle</b>	92°
<b>Chromaticity tolerance LED</b>	< 3 SDCM
<b>Glare control</b>	Screen
<b>Luminance (L65)</b>	≤ 4.200 cd/m <sup>2</sup>
<b>Unified glare rating (4H 8H)</b>	≤ 22
<b>System of protection</b>	IP 67
<b>Class of protection</b>	III
<b>Technology</b>	Multi-stage switchable
<b>Operation</b>	External
<b>Housing</b>	Aluminium; Anodised; Aluminium coloured anodised Borosilicate
<b>Light source cover</b>	
<b>Weight (net)</b>	ca. 3,7 kg
<b>Mains lead</b>	Built-in plug; M12-A-5
<b>Design</b>	mounted version
<b>Fastening</b>	Snap-fit
<b>Dimension</b>	A=565 mm
<b>Minimum ambient temperature</b>	0 °C
<b>Maximum ambient temperature</b>	50 °C
<b>Special features</b>	ADVANCED package

