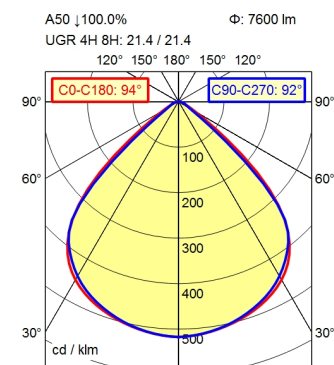
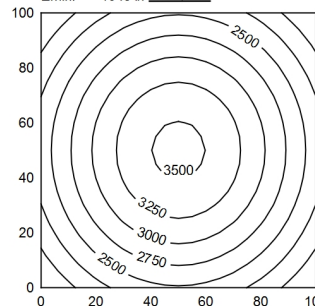


M12-A-5



100 x 100 cm Φ : 7600 lm
Em: 2789 lx
Emax: 3532 lx
Emin: 1945 lx
= 100 cm



0.50 m	15729 lx	1.07 m 1.03 m
1.00 m	3932 lx	2.13 m 2.07 m
1.50 m	1748 lx	3.20 m 3.10 m
2.00 m	983 lx	4.27 m 4.13 m

Light source	LED
Work equipment	Without
Connected load	24 V; DC
Power consumption	ca. 56 W
Luminous flux	approx. 7.600 lm
Luminous efficiency	approx. 135 lm/W
Light type/color	Cold white
Colour temperatur	approx. 5.000 K
Color rendering index	CRI \geq 80; R9 \geq 10
Light distribution	Direct; Symmetric
Beam angle	92°
Chromaticity tolerance LED	< 3 SDCM
Glare control	Screen
Luminance (L65)	\leq 4.200 cd/m ²
Unified glare rating (4H 8H)	\leq 22
System of protection	IP 67
Class of protection	III
Technology	Multi-stage switchable
Operation	External
Housing	Aluminium; Anodised; Aluminium coloured anodised Borosilicate
Light source cover	
Weight (net)	ca. 4,8 kg
Mains lead	Built-in plug; M12-A-5
Design	mounted version
Fastening	Snap-fit
Dimension	A=740 mm
Minimum ambient temperature	0 °C
Maximum ambient temperature	50 °C
Special features	ADVANCED package

