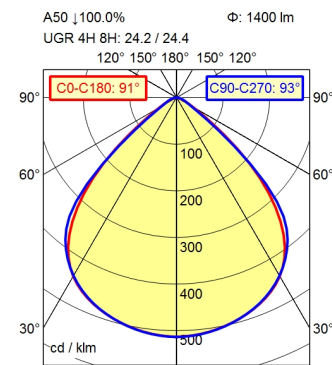
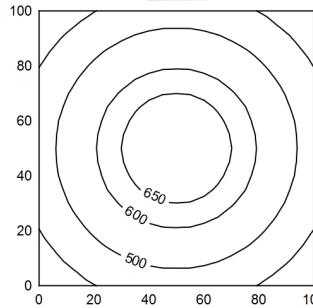


M12-A-5

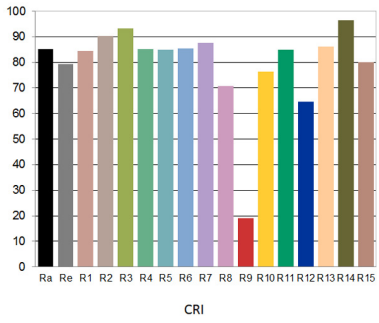
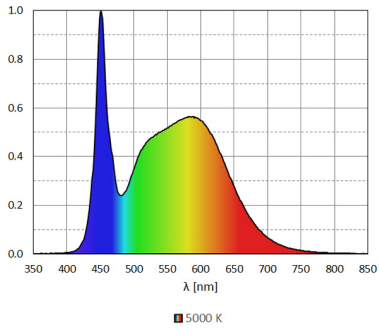


100 x 100 cm $\Phi: 1400 \text{ lm}$
 Em: 534 lx
 Emax: 695 lx
 Emin: 362 lx



Height (m)	Beam Angle	Light Intensity (lx)	Radius (m)	Diameter (m)
0.50	91° / 93°	2874	1.02	2.04
1.00	91° / 93°	719	2.04	4.08
1.50	91° / 93°	319	3.06	6.12
2.00	91° / 93°	180	4.08	8.16

Light source	LED
Work equipment	Without
Connected load	24 V; DC
Power consumption	ca. 12 W
Luminous flux	approx. 1.400 lm
Luminous efficiency ¹⁾	approx. 116 lm/W
Light type/-color	Cold white
Colour temperatur	approx. 5.000 K
Color rendering index	CRI \geq 80; R9 \geq 10
Light distribution	Direct; Symmetric
Beam angle	91°
Chromaticity tolerance LED	< 3 SDCM
Glare control	Optics
Luminance (L65)	\leq 11.000 cd/m ²
Unified glare rating (4H 8H) ²⁾	\leq 22
System of protection	IP 67
Class of protection	III
Technology	Multi-stage switchable
Operation	External
Emergency lighting	none
Housing	Aluminium; Anodised; Aluminium coloured anodised Borosilicate
Light source cover	
Mains lead	Built-in plug; M12-A-5
Design	mounted version
Fastening	Screws
Minimum ambient temperature	0 °C
Maximum ambient temperature	50 °C
EAN	4013330143343
Weight (net)	ca. 0,6 kg
Dimensions	227,5 mm; 70 mm; 19 mm
Dimensions (dimensional drawing)	A = 227,5mm, C = 207,5mm
Special features	ADVANCED package



1) For luminaires with separate control gear, the luminous efficacy refers to the luminaire head without control gear
 2) according to DIN EN 12464-1:2021