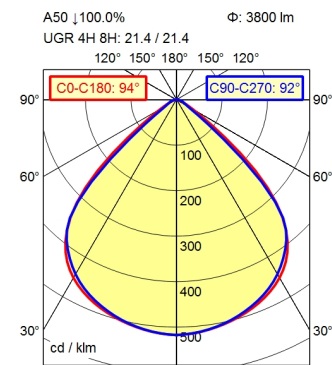
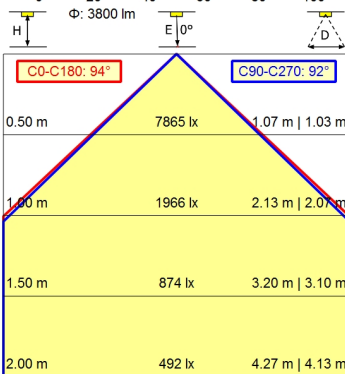
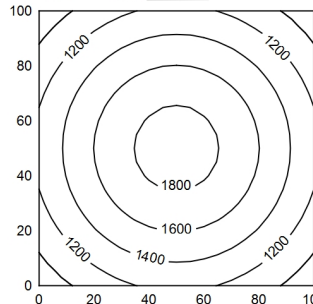


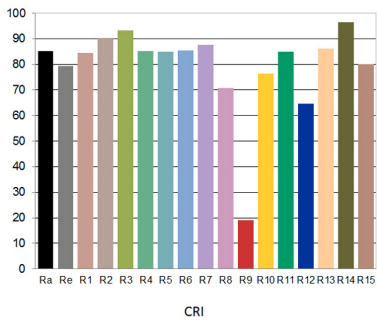
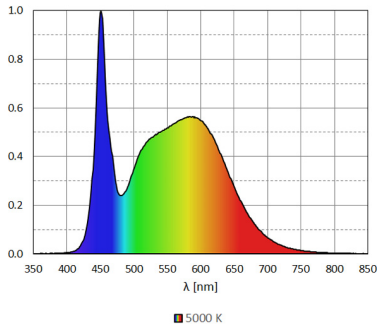
M12-A-5



100 x 100 cm Φ : 3800 lm
 Em: 1444 lx
 Emax: 1865 lx
 Emin: 984 lx



Light source	LED
Work equipment	Without
Connected load	24 V; DC
Power consumption	ca. 28 W
Luminous flux	approx. 3.800 lm
Luminous efficiency ¹⁾	approx. 135 lm/W
Light type/color	Cold white
Colour temperatur	approx. 5.000 K
Color rendering index	CRI \geq 80; R9 \geq 10
Light distribution	Direct; Symmetric
Beam angle	92°
Chromaticity tolerance LED	< 3 SDCM
Glare control	Optics
Luminance (L65)	\leq 4.200 cd/m ²
Unified glare rating (4H 8H) ²⁾	\leq 22
System of protection	IP 67
Class of protection	III
Technology	Multi-stage switchable
Operation	External
Emergency lighting	none
Housing	Aluminium; Anodised; Aluminium coloured anodised Borosilicate
Light source cover	Borosilicate
Mains lead	Built-in plug; M12-A-5
Design	mounted version
Fastening	Screws
Minimum ambient temperature	0 °C
Maximum ambient temperature	50 °C
EAN	4013330143299
Weight (net)	ca. 2,7 kg
Dimensions	402,5 mm; 170 mm; 19 mm
Dimensions (dimensional drawing)	A = 402,5mm, C = 382,5mm
Special features	ADVANCED package



1) For luminaires with separate control gear, the luminous efficacy refers to the luminaire head without control gear
 2) according to DIN EN 12464-1:2021