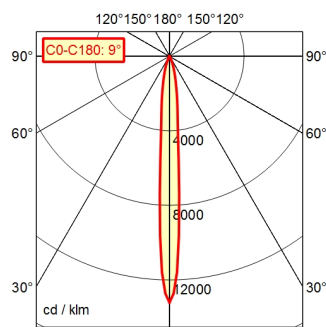
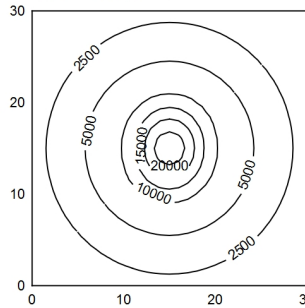


A80 100.0% Φ : 600 lm



30 x 30 cm Φ : 600 lm
Em: 5010 lx
Emax: 28559 lx
Emin: 839 lx



H	Φ : 600 lm	E [lx]	D
0.25 m		126826 lx	0.039 m
0.50 m		31706 lx	0.078 m
0.75 m		14092 lx	0.12 m
1.00 m		7927 lx	0.16 m

Light source
Work equipment
Connected load
Secondary tension
Power consumption
Sec. power consumption
Luminous flux
Luminous efficiency¹⁾
Light type/-color
Colour temperatur
Color rendering index
Light distribution
Beam angle
Chromaticity tolerance LED
Glare control
Luminance (L65)
UGR class (4H 8H; EN 12464-1)
System of protection/Class
Technology
Operation
Housing
Light source cover
Arm
Balance of articulation joints
Mains lead
Fastening
Maximum ambient temperature
EAN
Weight without/incl. packaging
Special features

LED
Electronic plug-in transformer
100 - 240 V; AC; 50 Hz; 60 Hz
24 V
ca. 8 W
ca. 7 W
approx. 600 lm
approx. 75 lm/W
Cold white
approx. 5.000 K
CRI \geq 80
Narrow-beam; Direct; approx. 100 %
10 °
< 4 SDCM
Optics
 \leq 4.000 cd/m²
 \leq 16
102; II with plug-in power supply, III without plug-in power supply
Switchable; Continuously dimmable
Push button
Aluminium; Anodised; Black
Borosilicate
Tubular aluminium section; Anodized; Black
Spring
ca. 3 m; Mains plug; CEE 7/XVI; BS 1363 A; NEMA 1-15P
Table clamp (accessory); Wall bracket (accessory); Screw-down flange
40 °C
4013330193164
ca. 2 kg
Fully spring-relieved arm

¹⁾ For luminaires with separate control gear, the luminous efficacy refers to the luminaire head without control gear

