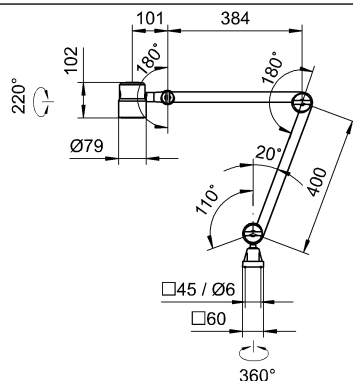


Arm-mounted luminaire ROCIA.focus RFD 600/850/D

114568000-00816832



CEE 7/XVI

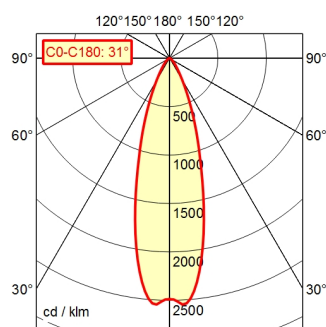


BS 1363 A



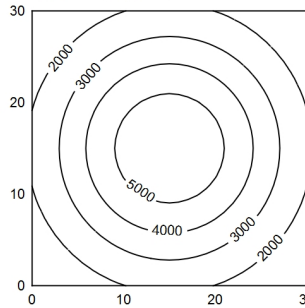
NEMA 1-15P

A70 ↓ 100.0% Φ: 550 lm



30 x 30 cm Φ: 550 lm

Em: 3261 lx
Emax: 5572 lx
Emin: 1223 lx



Φ: 550 lm E: 0°

C0-C180: 31°		
0.25 m	21895 lx	0.14 m
0.50 m	5474 lx	0.27 m
0.75 m	2433 lx	0.41 m
1.00 m	1368 lx	0.55 m

Light source

Work equipment

Connected load

Secondary tension

Power consumption

Sec. power consumption

Luminous flux

Luminous efficiency ¹⁾

Light type/-color

Colour temperatur

Color rendering index

Light distribution

Beam angle

Chromaticity tolerance LED

Glare control

Luminance (L65)

UGR class (4H 8H; EN 12464-1)

System of protection/Class

Technology

Operation

Housing

Light source cover

Arm

Balance of articulation joints

Mains lead

Fastening

Maximum ambient temperature

EAN

Weight without/incl. packaging

Special features

LED

Electronic plug-in transformer

100 - 240 V; AC; 50 Hz; 60 Hz

24 V

ca. 8 W

ca. 7 W

approx. 550 lm

approx. 68 lm/W

Cold white

approx. 5.000 K

CRI ≥ 80

Wide beam; Direct; approx. 100 %

30 °

< 4 SDCM

Optics

≤ 6.000 cd/m²

≤ 19

102; II with plug-in power supply, III without plug-in power supply

Switchable; Continuously dimmable

Push button

Aluminium; Anodised; Black

Borosilicate

Aluminium tube; Anodized; Black

Spring

ca. 3 m; Mains plug; CEE 7/XVI; BS 1363 A; NEMA 1-15P

Table clamp (accessory); Wall bracket (accessory);

Screw-down flange

40 °C

4013330193188

ca. 2 kg

Fully spring-relieved arm

¹⁾ For luminaires with separate control gear, the luminous efficacy refers to the luminaire head without control gear

