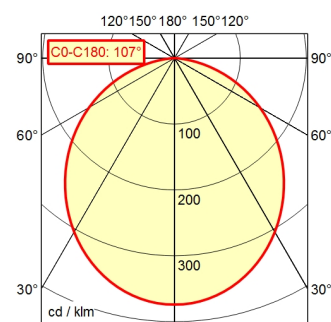
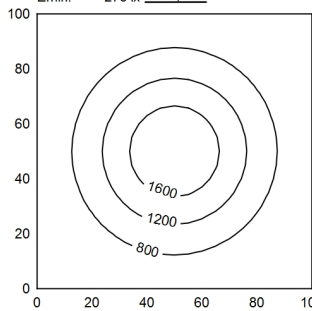


A40 ↓ 100.0% Φ: 1450 lm

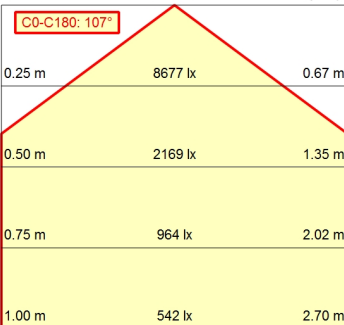


100 x 100 cm Φ: 1450 lm

Em: 852 lx
Emax: 1890 lx
Emin: 276 lx
= 50 cm



Φ: 1450 lm E: 0°



Light source
Work equipment
Connected load
Secondary tension
Power consumption
Sec. power consumption
Luminous flux
Luminous efficiency¹⁾
Light type/-color
Colour temperatur
Color rendering index
Light distribution
Beam angle
Chromaticity tolerance LED
Glare control
Luminance (L65)
UGR class (4H 8H; EN 12464-1)
System of protection/Class
Technology
Operation
Housing
Light source cover
Arm
Balance of articulation joints
Mains lead
Fastening
EAN
Weight without/incl. packaging
Special features

LED
Electronic plug-in transformer
100 - 240 V; AC; 50 Hz; 60 Hz
24 V
ca. 18 W
ca. 16 W
approx. 1.450 lm
approx. 90 lm/W
Cold white
approx. 5.000 K
CRI ≥ 80
Direct; approx. 100 %
110°
< 4 SDCM
Diffusor
≤ 23.000 cd/m²
≤ 28
IP 20 [IP65]; II with plug-in power supply, III without plug-in power supply
Switchable; Continuously dimmable
Push button
Aluminium; Painted; Jet black
Polycarbonate (PC); White opal
Tubular aluminium section; Anodized; Black
Spring
ca. 3 m; Mains plug; CEE 7/XVI; BS 1363 A; NEMA 1-15P
Table clamp (accessory); Wall bracket (accessory); Screw-down flange 4013330193201
ca. 1,9 kg
Fully spring-relieved arm

¹⁾ For luminaires with separate control gear, the luminous efficacy refers to the luminaire head without control g

